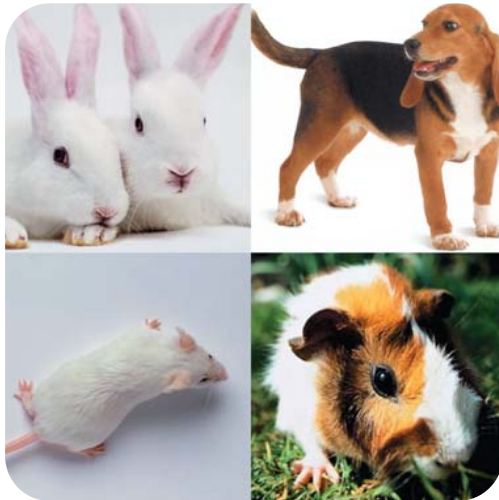


## COLLARS - ELIZABETHAN, CERVICAL AND PILLOW



Lomir collars are designed and manufactured to reduce or eliminate many of the factors which can compromise investigations. In protecting sensitive equipment and reducing discomfort and stress levels for the subjects, this comprehensive range helps to protect the integrity of a wide variety of procedures on all laboratory animal species. A large range of standard sizes are available with other sizes, for special needs, made to order. For more information, or to order please visit us online at [www.lomir.com](http://www.lomir.com) or call 1-877-425-3604.



### ELIZABETHAN COLLARS

Prevent animals from self grooming, and protect surgical or treatment sites.

All collars are manufactured from a low density polyethylene and close with ample Velcro fasteners, providing adjustable and secure fit for individual animals. Neck openings are bound with cotton jersey for comfort.



### CERVICAL COLLARS

Offer an alternative to Elizabethan collars, allowing the animal unrestricted vision.



### PILLOW COLLARS

Are designed for use in a wide range of applications:

- May be used in combination with an infusion jacket.
- For protection of devices such as infusion pumps.
- For protection in post surgical or treatment situations.

Made from durable, washable canvas and available with optional fasteners for jacket or harness attachment. A special feature is the removable foam pillow insert.

Available in white or black in a comprehensive range of sizes with custom models made to order.



458 East Main Street, Malone, NY, 12953  
Tel: (518) 483-7697 Fax: (518) 483-8195  
Toll Free: (877) 425-3604  
[www.lomir.com](http://www.lomir.com)

95 Huot, Notre-Dame-de-l'Île-Perrot, Qc., J7V 7M4  
Tel: (514) 425-3604 Fax: (514) 425-3605  
Toll Free: (877) 425-3604  
[www.lomir.com](http://www.lomir.com)